

AVT**RETAILS**

AVTRETAILS

We are your working partner in retail sector!

AVTRetails established in 2007 with main office in Hong Kong, branch offices in Shanghai & Chengdu of China, Malaysia as well as registered office in Macau and Singapore.

We are a group of building professionals who have delivered more than 450 nos. of luxury retail projects in East & Southeast Asia, and 15 nos. of projects for department stores and shopping malls in Hong Kong and China. We focus on providing services in relation to Interior Fitting Out, related Façade and Structural Works.

Our projects locate in all high-end shopping malls in China, Hong Kong, Macau, Mongolia and Singapore. In addition, we have recently extended our work to South Korea and Southeast Asia cities.

If you are working in retail sector, you will find our project experience helpful to your business. Just feel free to contact us to know more about AVTRetails!



PROJECT

Retail Brand
>50 nos.

Completed Project
China >350 nos.
Other location >100 nos.

Shopping Mall with Completed Project
China >200nos.
Other location >60nos.

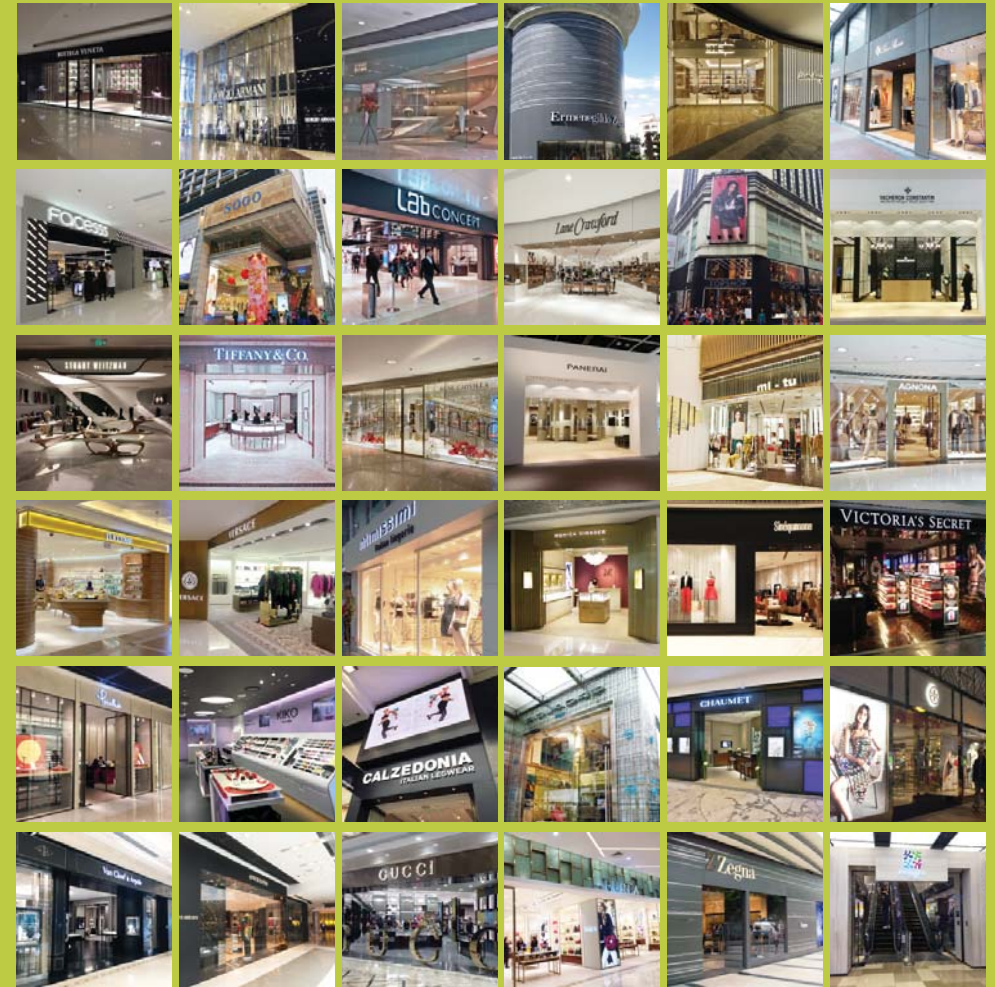
BRAND

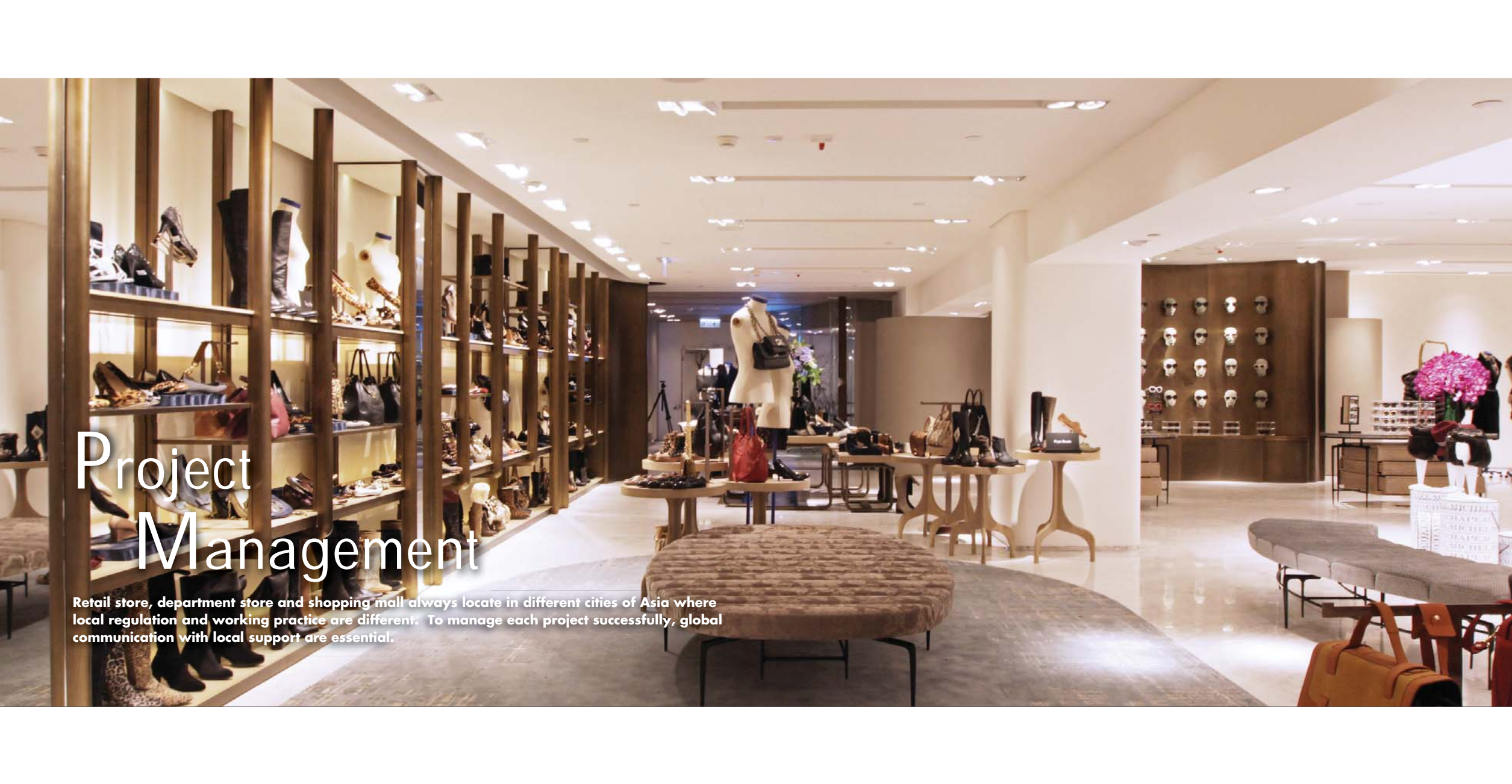
A. LANGE & SÖHNE	GIORGIO ARMANI	PIQUADRO
ARMANI CASA	GIUSEPPE ZANOTTI DESIGN	POMELLATO
ARMANI COLLEZIONI	GIVENCHY	PRADA
ARMANI JEANS	GUCCI	PRONOVIAS
ARMANI JUNIOR	HERMÈS	RALPH LAUREN
BERLUTI	IKEA	RENE CAO VILLA
BOTTEGA VENETA	ILLY	ROLEX
BURBERRY	INTIMISSIMI	SALVATORE FERRAGAMO
CALZEDONIA	J. CHEVALIER	SOGO
CÉLINE	JIMMY CHOO	STUART WEITZMAN
CHAUMET	L'OCCITANE	SWAROVSKI
CHLOÉ	LAB CONCEPT	THOM BROWNE
CHRISTIAN LOUBOUTIN	LACOSTE	TIFFANY & CO.
CITISTORE	LANE CRAWFORD	TOPSHOP
DEVIALET	LA PERLA	TORY BURCH
DIANE VON FURSTENBERG	LANVIN	VACHERON CONSTANTIN
DOLCE & GABBANA	LOEWE	VALEXTRA
DUNHILL	LONGCHAMP	VAN CLEEF & ARPELS
EA7	LORO PIANA	VERSACE
EMPORIO ARMANI	MIU MIU	VICTORIA'S SECRET
ERMENEGILDO ZEGNA	MONICA VINADER	ZEGNA SPORT
FACESSS	NESPRESSO	ZENITH
FOREVERMARK	OFFICINE PANERAI	ZUNG FU
FURLA	PHILIPP PLEIN	Z ZEGNA

Our Service

We provide following specialist services for Retail Store, Department Store and Shopping Mall. Services can be provided separately or selectively together to suit your need:

1. Project Management
2. Design Development
3. Site Survey
4. Statutory Submission
5. Site Supervision
6. Construction
7. Furniture Fabrication
8. Tenant Coordination
9. Design





Project Management

Retail store, department store and shopping mall always locate in different cities of Asia where local regulation and working practice are different. To manage each project successfully, global communication with local support are essential.

PROJECT MANAGEMENT



Led by our in-house professional teams and collaboration with other local bodies, our delivered projects basically cover all high-end shopping malls, with:

Retail Brand
>50 nos.

Project in China
>350 nos.

Project in other location
>100 nos.

PROJECT MANAGEMENT



If you are planning to open a store in East or Southeast Asia, you will find our planning advice useful for aspect in relation to:

- Overall procedure
- Procurement strategy
- Cost estimation
- Quality control

PROJECT MANAGEMENT



In current market, concept designs are always provided by global designers or in-house retail brand designer.

We act as Executive Architect / Interior Designer to execute the concept design to final constructed premises. With our service, the concept design can be executed to:

- Achieve targeted project cost, time & work quality
- Full set design / tender / construction packages
- Apply to typical design
- Suit specific procurement methodology
- Comply with local material & construction methodology
- Comply with local regulation

PROJECT MANAGEMENT





Design Development

Technical Drawing is essential for all projects especially for tendering and construction purpose.

DESIGN DEVELOPMENT



It is revealed that ready-to-build comprehensive tender / construction packages can save Time and Cost by leading to:

- Accurate cost estimation of construction work
- Reduction of time for tender pricing by tenderer
- Reduction of time for preparation & approval of shop drawings
- Minimum variation works thus unexpected cost
- Minimum coordination work during construction stage

DESIGN DEVELOPMENT



We provide such packages for interior fitting out and A&A works that comply with aspects regarding concept design, regulation, specification, construction methodology, durability, maintenance, time and cost control.

DESIGN DEVELOPMENT

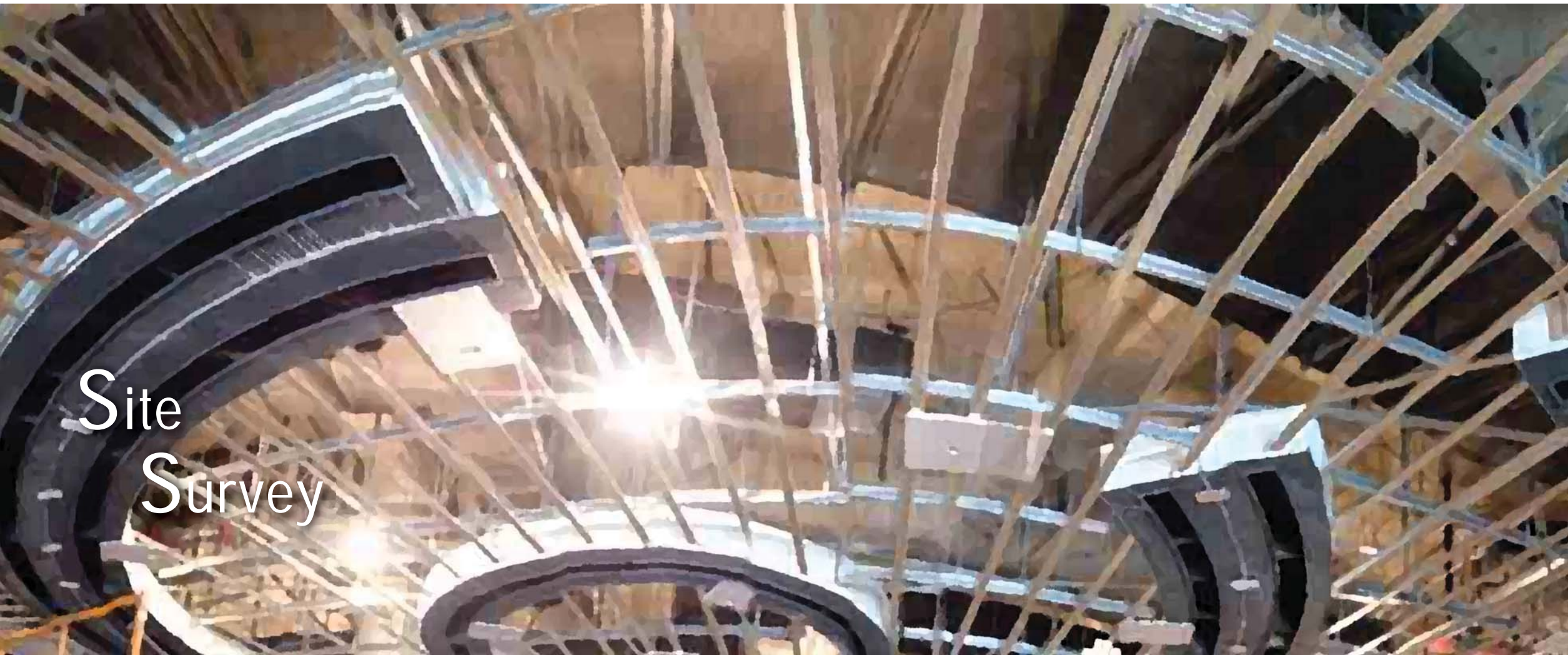


Our Hong Kong & Shanghai based Design & Technical Teams, together with support from our technical office in Chengdu China as well as registered contractors in Hong Kong and China, have developed comprehensive tender & construction packages for numerous leading developers, global brands and designers, with project scale ranging from individual Retail Store to Department Store and Shopping Mall:

Retail Store
> 450 nos.

Department Store
- 10 nos.

Shopping Mall
- 5 nos.



Site
Survey

SITE SURVEY



Tenant bases on existing site condition to prepare design. There is always landlord provision, restriction, local regulation and practice that tenant has to fully aware of in order to provide minimize abortive time and cost:

- Surveyed Area > 1,000,000 s.f.
- Completed survey > 500
- Area of each survey - 150 to 130,000s.f.

We provide professional site survey service for:-

- Landlord of Department Store / Shopping Mall
- Tenant of Department Store / Shopping Mall

By conducting on-site and off-site coordination work between Landlord and Tenant, we provide necessary information, drawing and photo for compliance with:-

- Landlord provision
- Site condition
- Site constraint
- Design constraint
- Statutory constraint



Statutory Submission

Statutory advice is required for each project to comply with local regulation. There are cases where statutory submission is required that corresponding professionals have to be engaged. Advanced planning is necessary as there are always time and cost implications.

STATUTORY SUBMISSION



Led by our in-house registered professionals and collaboration with other local bodies, we ensure compliance of local regulation for all projects, and arrange statutory submission whenever not avoidable.

Apart from statutory submission, compliance with regulation during construction stage is also essential for each project. We do not only have professionals at consultancy side, we are also registered contractors in Hong Kong and China that we understand well what have to be complied with throughout the entire project period.

A photograph of a construction site. In the foreground, a man wearing a white hard hat, glasses, a light blue shirt, and a dark suit jacket is looking down. The background shows a large, partially constructed building with concrete pillars and walls. There are piles of dirt and construction materials on the ground. The overall scene is a busy construction environment.

Site Supervision

There is always very tight time frame for retail projects. However, work quality can never be compromised. For flagship retail store, department store and shopping mall, daily on-site coordination with contractor, sub-contractor, supplier, vendor, landlord, government bodies and consultants is a proven methodology to achieve high level of workmanship standard within scheduled time.

SITE SUPERVISION



We have been providing both full time and part time resident site managers for site coordination work. Site managers are experienced specialists who have sound experience in relation to:

- Design interpretation
- Contract administration
- Local regulation
- Construction detail
- Construction sequence

It is a challenge for pure consultancy or construction company to provide such site manager because above items are distinct services available from these two entities. Our site managers are strictly selected to ensure they have sufficient competent and site experience.

In addition, they are fully supported by both our in-house consultancy and construction teams led by corresponding professionals.



Construction

CONSTRUCTION



For flagship retail store, department store and shopping mall, there are always consultants who prepare tender package for bidding by potential main contractors.

CONSTRUCTION



We have been delivering construction service by our Hong Kong and China registered construction companies for retail stores in Hong Kong, Macau and China:

Retail Brand
> 15 nos.

Project in China
> 10 nos.

Project in other location
> 30 nos.

CONSTRUCTION



To provide fast track and cost effective retail store construction work, there are increasing projects that retail brand has her own project team who directly invites main contractors to tender for construction work. Majority of our construction services are engaged by retail brand and completed simply with designer and employer. This works well by our experienced teams who deliver competent services in relation to project management, detail design, government approval and construction work quality with our varies direct labor, sub-contractors, suppliers and furniture factories.



Furniture Fabrication

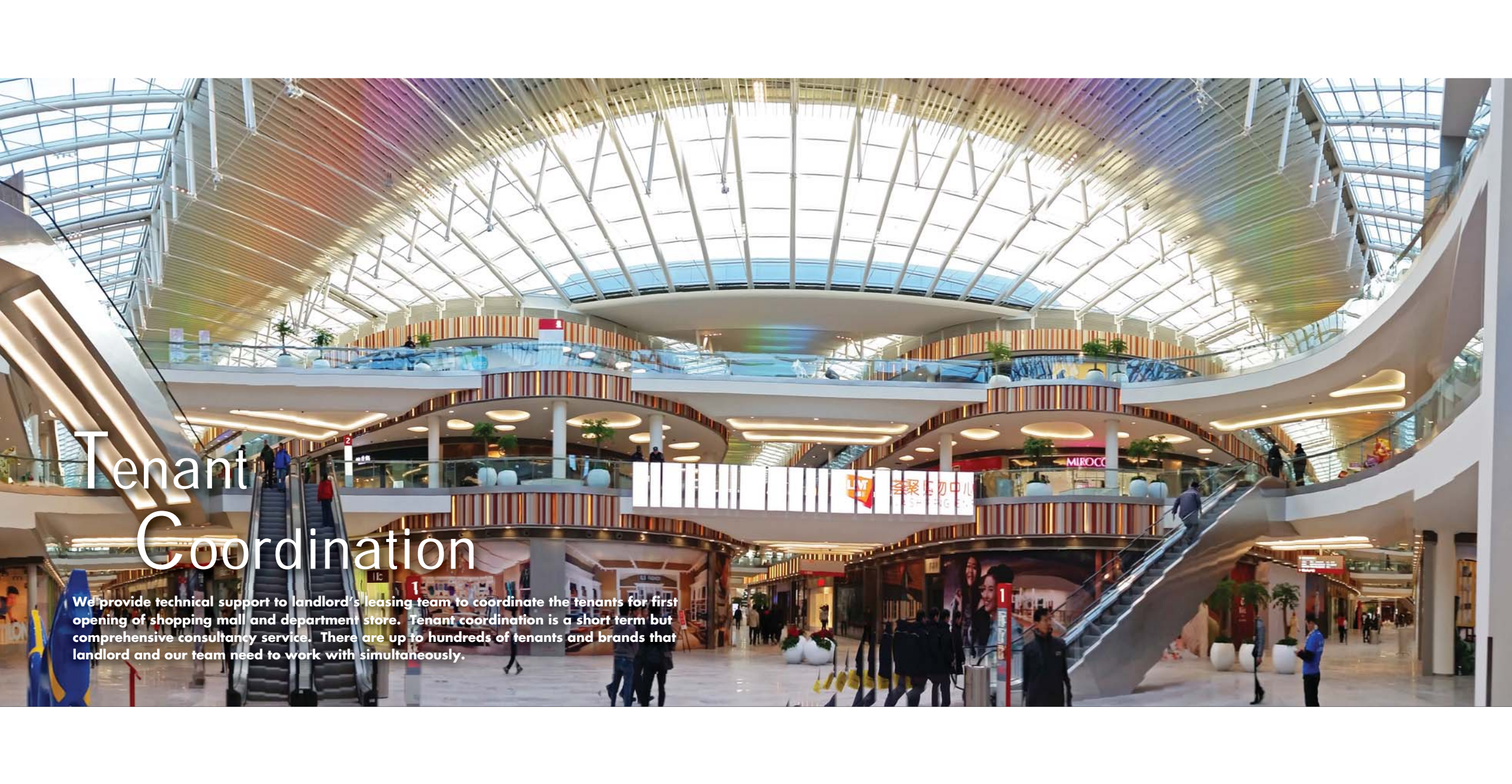
Furniture plays a dominant role in retail store where visual merchandising is displayed. The required quality, accuracy to fit site dimension, pre-fabrication time and installation methodology are determined in furniture factory.

FURNITURE FABRICATION



We have been working with most of the best furniture factories in China and are strategically collaborated with selected factories for our retail store projects according to the store's character and project need. This is to provide the most suitable factory for each project in term of cost and quality.

For general retail store, we fabricate furniture by our partnered factory in Shanghai, China. Three dimensional furniture and feature will be fabricated by our Dongguan factory who fabricated freeform corian and GRG for Stuart Weitzman Stores designed by the well-known British architect Zaha Hadid.



Tenant Coordination

We provide technical support to landlord's leasing team to coordinate the tenants for first opening of shopping mall and department store. Tenant coordination is a short term but comprehensive consultancy service. There are up to hundreds of tenants and brands that landlord and our team need to work with simultaneously.

TENANT COORDINATION



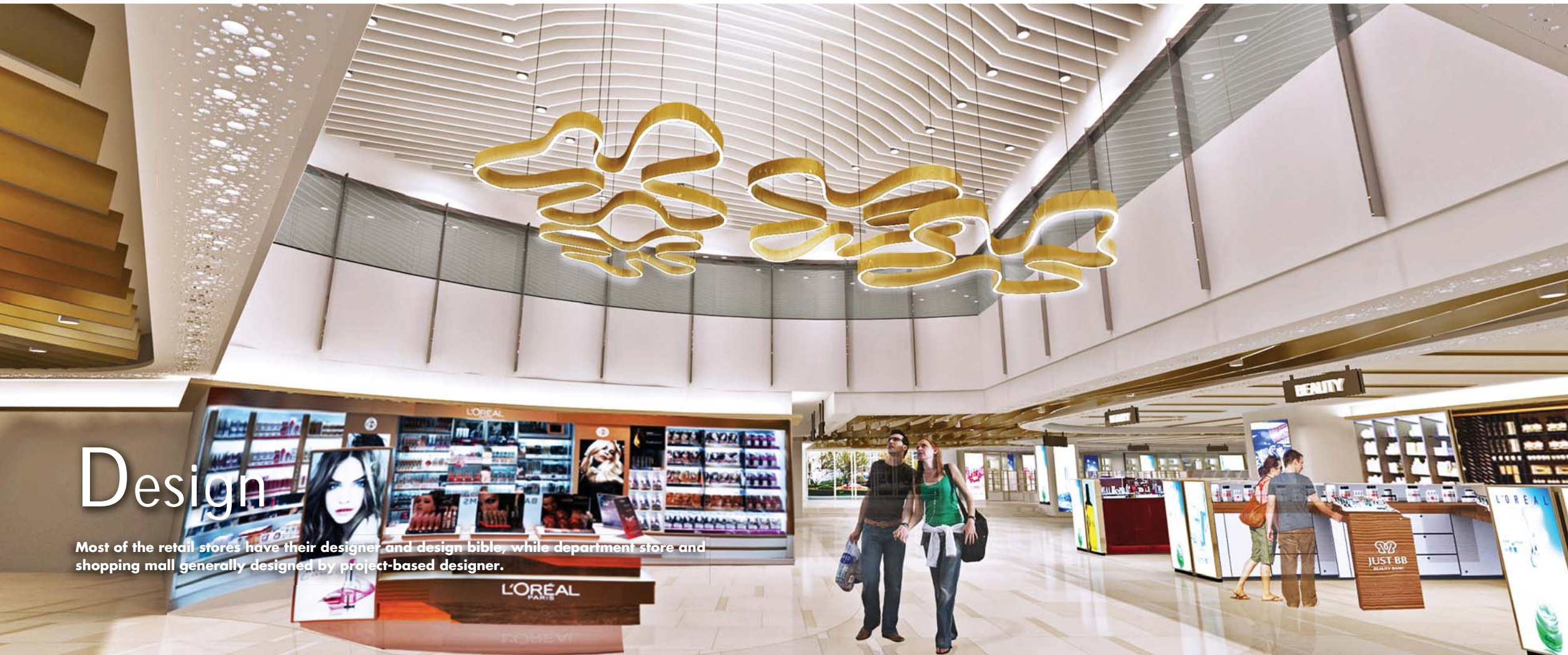
For shopping mall, we deliver our tenant coordination service by an on-site team as well as provision of necessary document and drawing by our off-site technical office.

For department store, the size of on-site team will be relatively smaller. Our service generally covers the technical aspects that leasing team needs support:

- Technical support to lease negotiation
- Landlord provision
- Tenant submission
- Site issue
- Tenant fit-out supervision

Design

Most of the retail stores have their designer and design bible, while department store and shopping mall generally designed by project-based designer.



DESIGN



The detail design service we provided for retail store, department store and shopping mall has a niche to fulfil concept design, local regulation and construction methodology. In addition, we compile design bible for retail store that can be effectively adopted for new stores.

We have been working with most of the retail designers worldwide. For client looks for design service, we selectively collaborate with experienced concept designer and we ensure that client's concern in cost, buildability, statutory compliance and durability are satisfied.

CONTACT

E avtreails@avtdesign.com.hk

HONG KONG

7/F, Novel Industrial Building,
850-870 Lai Chi Kok Road, Cheung Sha Wan, HK

Mr. Patrick Ngan

E patrick.ngan@avtdesign.com.hk
T (852) 3696 6411/ (852) 9721 2921

Mr. Joe Chow

E joe@avtdesign.com.hk
T (852) 3696 6401/ (852) 6632 8807

SHANGHAI

Room 415, Building A, No.208 Wending Road,
Xuhui District, Shanghai, PRC 200030

Ms. Kinki Lou

E kinki@avtdesign.com.hk
T (86) 21 5213 3190 Ext. 804/ (86) 1810 181 0531

Mr. Edmond Lee

E edmond@avtdesign.com.hk
T (86) 21 5213 3190 Ext. 807/ (86) 1592 177 0234

CHENGDU

Room 1105, Block C, East International Plaza,
229 Zhiqian Section Of East Avenue, Chengdu 610061,
PRC

MACAU

Av. Praia Grande, No.367-371,
Keng Ou Commercial Building, 17th Fl. B, Macau

IPOH

No. 75A, Regat Sri Cempaka,
Taman Cempaka, 31400 Ipoh, Perak, Malaysia

SINGAPORE

29 Tai Seng Ave,
#06-04B Natural Cool Lifestyle Hub, Singapore 534119